

# MONTHLY MEMBERSHIP PROGRESS REPORT

District 20 E1

Results as of: 10/31/2023

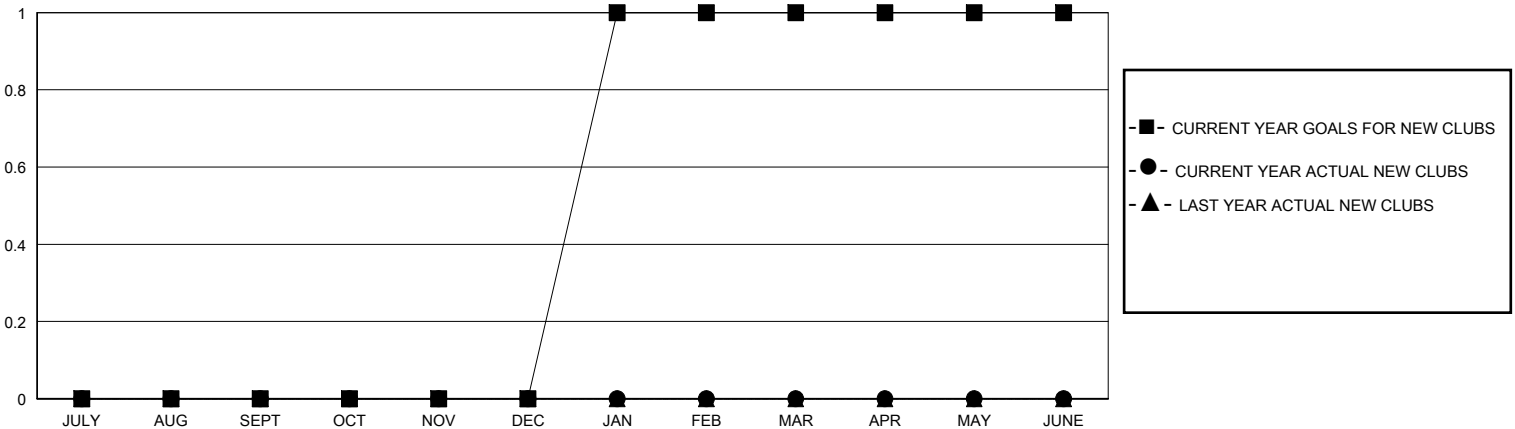
GMT:

LOCATION NEW YORK

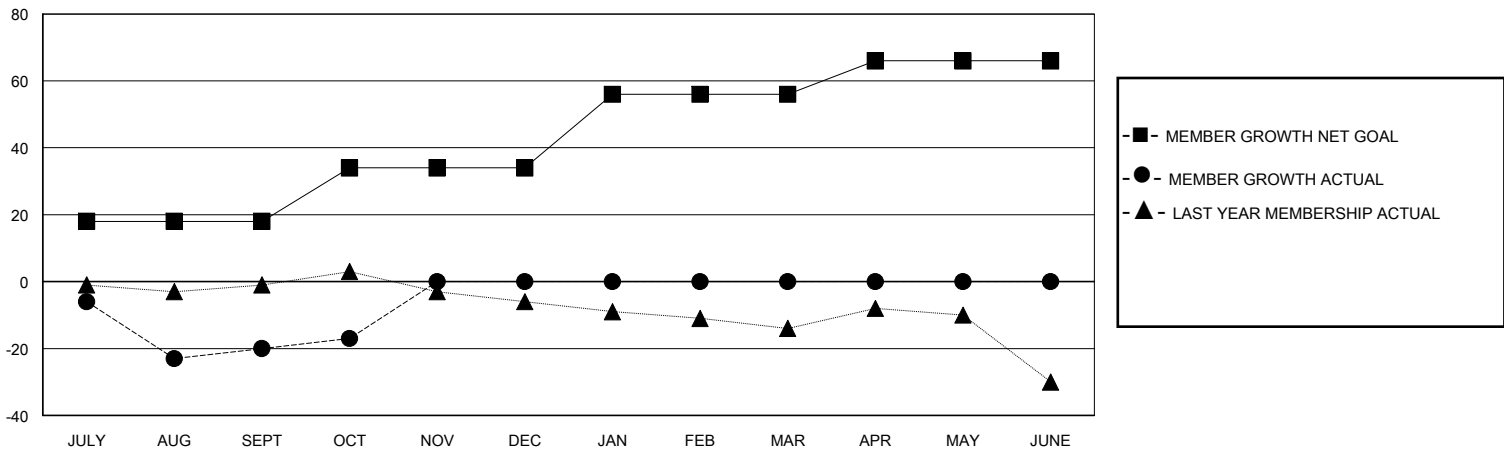
GMT CA

Clubs				Members			
RESULTS FOR 2023-2024				RESULTS FOR 2023-2024			
QUARTER	NEW CLUB GOAL	NEW CLUBS	DROPPED CLUBS	QUARTER	MEMBER GROWTH NET GOAL	MEMBER GROWTH ACTUAL	DROPPED MEMBERS ACTUAL (including transfers)
JULY/AUG/SEPT	0	0	0	JULY/AUG/SEPT	18	12	30
OCT/NOV/DEC	0	0	0	OCT/NOV/DEC	16	7	3
JAN/FEB/MAR	1	0	0	JAN/FEB/MAR	22	0	0
APR/MAY/JUNE	0	0	0	APR/MAY/JUNE	10	0	0

GOALS AND ACTUAL NEW CLUBS CUMULATIVE



GOALS AND ACTUAL MEMBERS CUMULATIVE



DROPPED CLUBS: 0	12 CLUBS OF 37 ADDED 1 OR MORE NEW MEMBERS	<b>GENDER DISTRIBUTION</b> MALE 839 (69.68%) FEMALE 364 (30.23%)
<b>DROPPED MEMBERS</b> DECEASED 6 CLUB CANCELLED 0 OTHER 27 TOTAL 33	<a href="#">CLICK HERE FOR CUMULATIVE MEMBERSHIP DATA</a>	TOTAL FAMILY UNIT MEMBERS 206 FAMILY MEMBERS PAYING HALF DUES 104